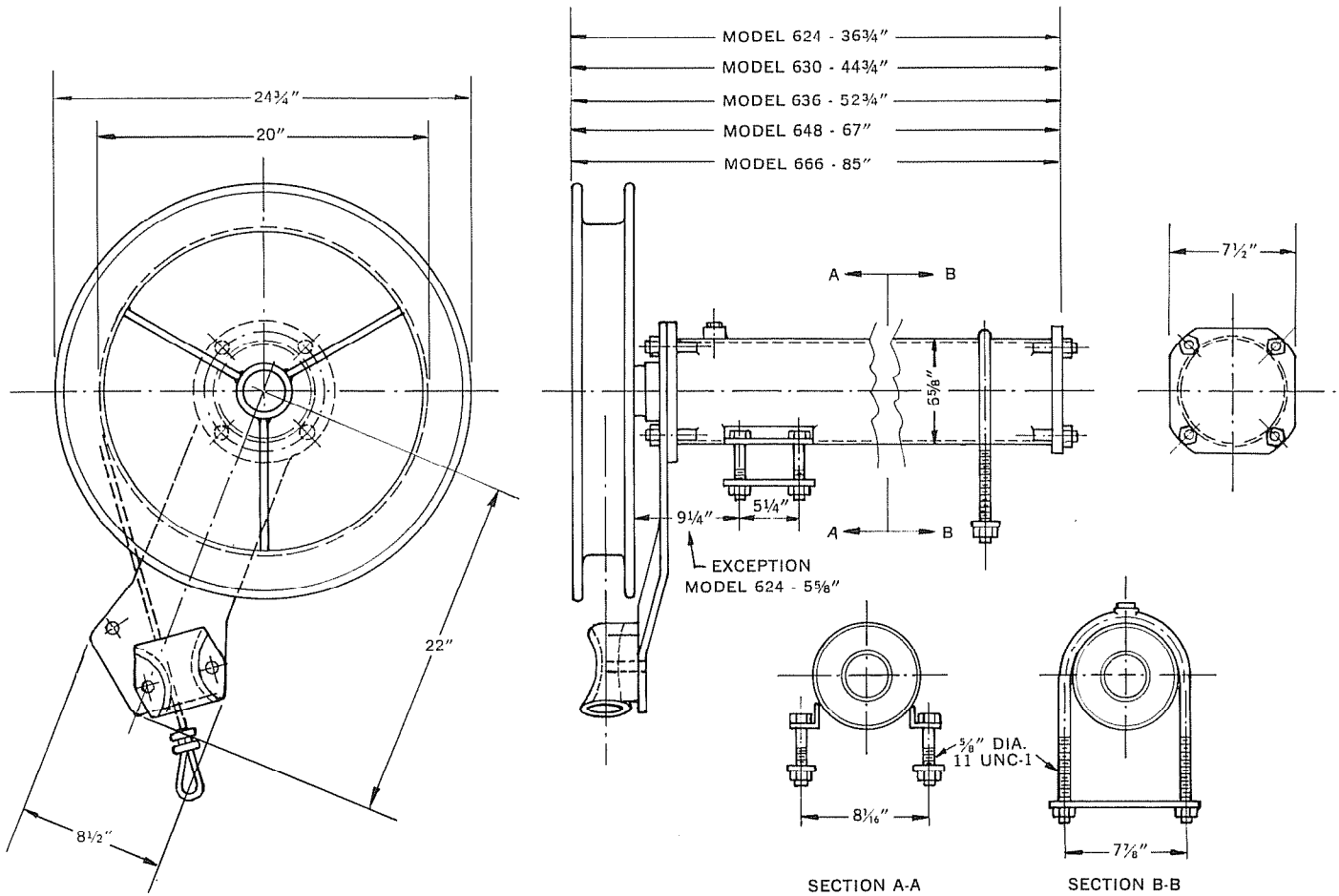


MOUNTING DIMENSIONS SINGLE BARREL RUD-O-MATIC® TAGLINE



SPECIFICATIONS AND MANUFACTURER'S RECOMMENDATIONS

Rud-O-Matic® Single Barrel Taglines are manufactured in five models to accommodate various size buckets and booms. Each model is engineered to have sufficient cable pullout with the required positive tension to provide full control of the bucket in operation. Tagline model specifications and manufacturer's recommendations for different buckets and booms are given below.

Shear Pin Breaking Point. To prevent coil spring overwinding, shear pin in bearing is designed to break and release spring tension if cable reel exceeds maximum recommended number of turns. Consult proper columns in chart to determine maximum number of cable reel turns for tagline model* before shear pin will break.

Model	Weights	Housing Length	Bucket Size	Cable Pullout From Neutral	Maximum Turns of Cable Reel	Spring Dimension (.393 wire)
624	215 lbs.	30"	Small truck cranes	45 ft.	8	6" dia., 24" closed, 36" free, 62 coils
630	240 lbs.	38"	3/8-yd. to 1/2-yd., 30 ft. boom	60 ft.	11	6" dia., 30" closed, 42" free, 76 coils
636	265 lbs.	46"	1/2-yd. to 5/8-yd., 40-60 ft. boom	70 ft.	13	6" dia., 36" closed, 50" free, 91 coils
648	305 lbs.	60"	3/4-yd. to 1 yd., 60-80 ft. boom	90 ft.	18	6" dia., 48" closed, 65" free, 121 coils
666	370 lbs.	78"	3/4-yd. to 1 yd., deep digging	135 ft.	25	6" dia., 62" closed, 87" free, 156 coils